

ALUMINUM
STOREFRONT

T225 Series 2-1/4" x 4-1/2" Thermally-Broken Front Set Storefront



The D8 Aluminum T225 Series Storefront is a sheer block front set thermally-broken system that delivers a sleek exterior appearance and high-energy efficiency.

This T225 can accommodate all standard PAC entrances and vents. It comes in a wide variety of custom painted and anodized finishes.

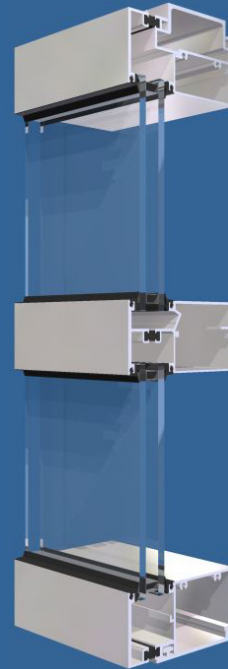
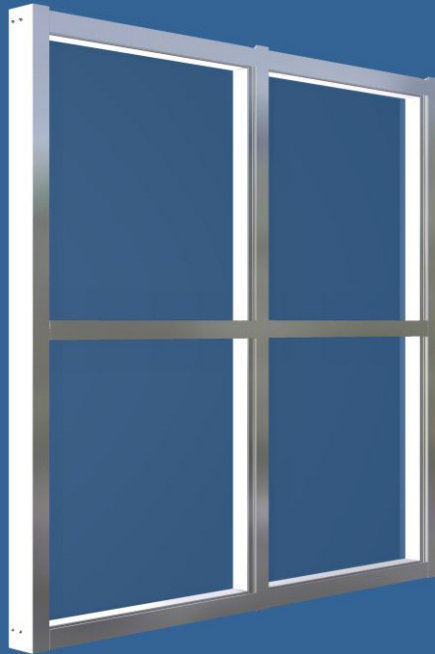
The T225 Series Thermally-Broken Front Set Storefront comes with an industry standard factory warranty.

FEATURES	RESULTS
Aluminum system	Sleek profile, long-lasting strength and durability
1/4" to 1" glazing options	Adaptable glazing options to accommodate design specifications and thermal performance requirements
2-1/4" profile width	Sleek appearance maximizes glass area
4-1/2" depth	Delivers structural integrity to accommodate design requirements
High-performance sub-sill	Localized water evacuation
Head compensation channel/ head lug options	Installation options plus accommodates slab deflection and is ideal for window replacement
Inside or outside glaze	Cost savings on installation and window replacement
Front set	Maximum interior space and sleek exterior appearance
Thermally broken	Enhanced energy savings and performance
Non-thermal option	Design options and cost savings
Structural silicone glazing (SSG) and standard vinyl weather seal configurations	Design flexibility
Custom painted and anodized finishes	Wide variety of finishes to accommodate design specifications and customer needs

ALUMINUM
STOREFRONT

T225 Series

2-1/4" x 4-1/2" Thermally-Broken Front Set Storefront



PERFORMANCE DATA

Air @ 6.24 PSF | Per ASTM E-283 <0.06 cfm/SF

Water | Per ASTM E-331 10 psf

U-Value | Per NFRC-100 0.35 - 0.56

NFRC CPD # PGS-K-4

